

## 24/7 ASSET MONITORING SOLUTION

# ENVIRONMENTAL SENSOR DATASHEET

### SENSeOR (head office)

Bâtiment Natura 2  
1198, avenue du Docteur  
Maurice Donat  
06250 Mougins  
France

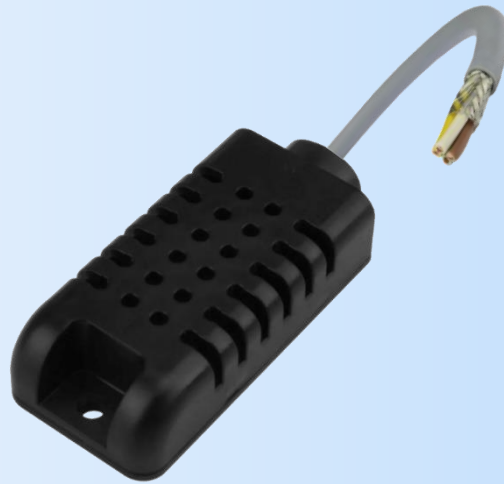
ISO 9001:2015

BUREAU VERITAS  
Certification



Contact address:

[support.senseor@wika.com](mailto:support.senseor@wika.com)



### Regional distributors

Visit [www.senseor.com](http://www.senseor.com) for  
the latest distribution  
locations.



## APPLICATION

The *AMS01-ENV-SENS* sensor is dedicated to switchgear monitoring as wired ambient temperature, relative humidity and dew point sensor. It is designed for use inside metallic cavities only like the switchgear cabinet and tuned to be compliant with IEC 62271 enabling a license-free use in switchgear worldwide.

## FIXATION MODE & PHYSICAL DIMENSIONS

The environmental sensor is mounted with one M4 screw (not included) on the metallic surface of the compartment.

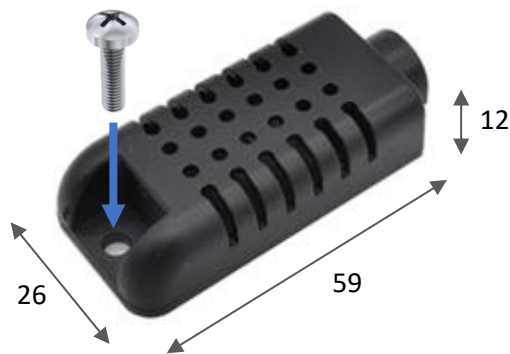


Figure 1: Fixation mode & physical dimensions (unit in mm)

## WIRING

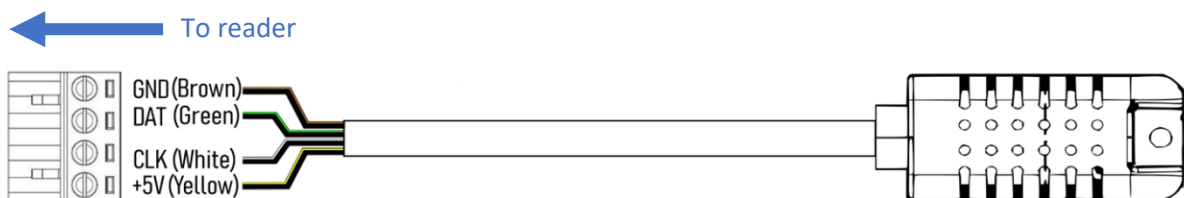


Figure 2: Environmental sensor connection

## PRODUCT MARKING



Figure 3: Product label

## SPECIFICATIONS

PRODUCT REFERENCE	WIKA PART NUMBER
AMS01-ENV-SENS	14594850

TEMPERATURE MEASUREMENT	
Operating range	From -25 to +125°C
Accuracy	± 2°C

HUMIDITY MEASUREMENT	
Operating range	From 0 to 100%
Accuracy	± 10% for relative humidity

INTERFACE	
Protocol standard	I <sup>2</sup> C
Cable type	4-conductor 24 AWG (0.25 mm <sup>2</sup> ) shielded cable Ø 5 mm
Cable length	3 m (extendable to 6-meter maximum length)

PHYSICALS	
Dimensions	59 x 26 x 12 mm – without cable
Weight	130 g
Ingress protection code	IP40
Enclosure	Black ABS
Fixation mode	M4 screw (not included)