

## 24/7 ASSET MONITORING SOLUTION

# ENVIRONMENTAL SENSOR DATASHEET

### SENSeOR (head office)

Bâtiment Natura 2  
1198, avenue du Docteur  
Maurice Donat  
06250 Mougins  
France

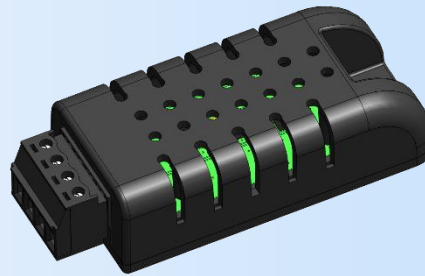
ISO 9001:2015

BUREAU VERITAS  
Certification



Contact address:

[support.senseor@wika.com](mailto:support.senseor@wika.com)



### Regional distributors

Visit [www.senseor.com](http://www.senseor.com) for  
the latest distribution  
locations.



## APPLICATION

The *EXT-ENV-SENS* sensor is dedicated to switchgear monitoring as wired ambient temperature, relative humidity and dew point sensor. It is designed for use inside metallic cavities only like the switchgear cabinet and tuned to be compliant with IEC 62271 enabling a license-free use in switchgear worldwide.

## FIXATION MODE & PHYSICAL DIMENSIONS

The environmental sensor is mounted with one M4 screw (not included) on the metallic surface of the compartment.

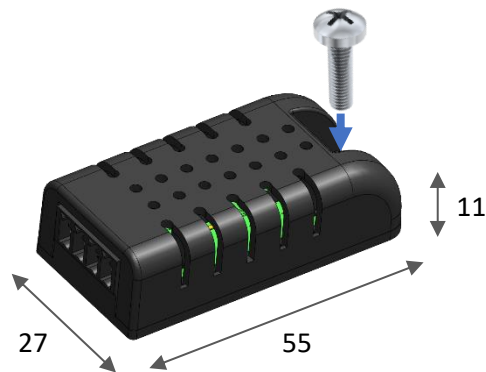


Figure 1: Fixation mode & physical dimensions (unit in mm)

## WIRING

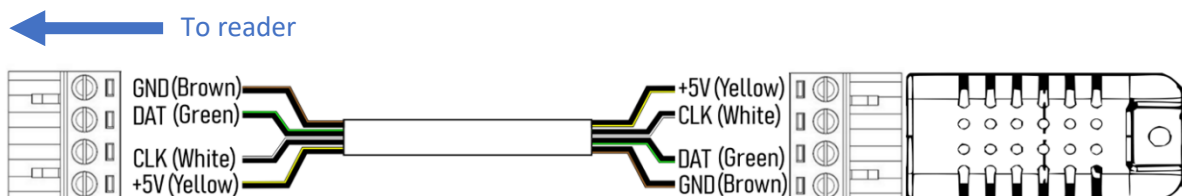


Figure 2: Environmental sensor connection

## PRODUCT MARKING

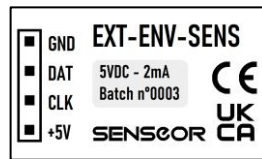


Figure 3: Product label

## SPECIFICATIONS

PRODUCT REFERENCE	WIKA PART NUMBER
EXT-ENV-SENS	14638422

TEMPERATURE MEASUREMENT	
Operating range	From -25 to +125°C
Accuracy	± 2°C

HUMIDITY MEASUREMENT	
Operating range	From 0 to 100%
Accuracy	± 10% for relative humidity

INTERFACE	
Protocol standard	I <sup>2</sup> C
Connector	4-contact terminal block pitch 3.81mm (included)
Recommended cable type	4-conductor 24 AWG (0.25 mm <sup>2</sup> ) cable Ø 5 mm
Maximum cable length	6 meters

PHYSICALS	
Dimensions	55 x 27 x 11 mm – without connector
Weight	12 g – without connector
Ingress protection code	IP40
Enclosure	Black ABS
Fixation mode	M4 screw (not included)